


WIRECAD V8 TRAINING

***Fast Track to
Enlightenment,
World Peace and
General "Real Guy"-ness***

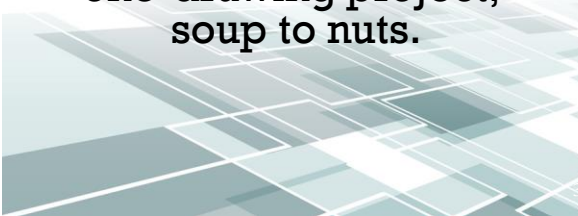


REMEMBER!!!

- F1** key opens the on-line help file.
- Also check out the WireCAD wiki @ www.wirecad.com/wiki or from within WireCAD click Help>WireCAD wiki.
- 

AGENDA DAY 1

Get all the way through
a small
one-drawing project,
soup to nuts.




AGENDA DAY 2

Fill in the holes
we skipped over
on Day 1



ABOUT THE AUTHOR

- Christian Holbrook, President Holbrook Enterprises, Inc.
 - Christian has had a long and diverse career in the entertainment electronics industry.
 - Christian served as the chief engineer of several production, postproduction, and broadcast facilities.
 - Christian served recently as Director of Engineering for the Fox Family Channel.
 - Christian has owned consulting firms, integration firms and an electronics manufacturing company.
 - Christian has traded his breadboard for the software development environment and created WireCAD to fill a need many people experience in the system design/integration arena.
- 

OVERVIEW

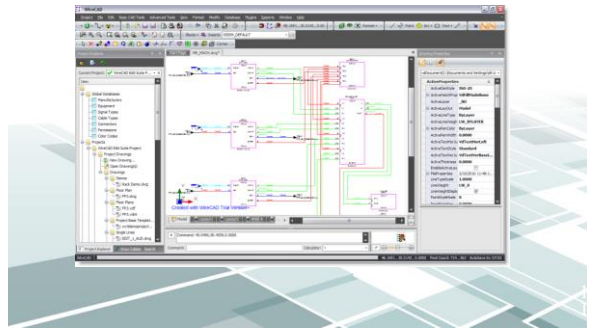
What for?



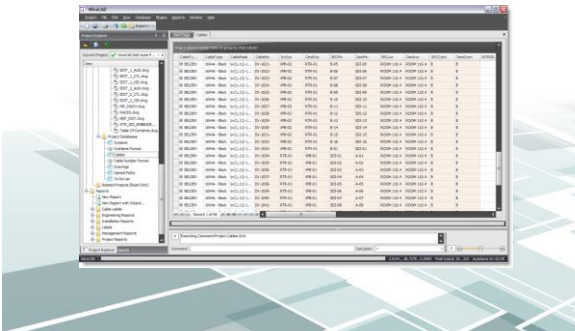
INSTALLATION PICTURES



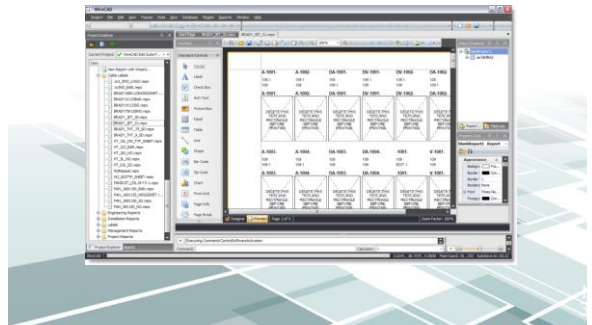
SYSTEM DRAWINGS



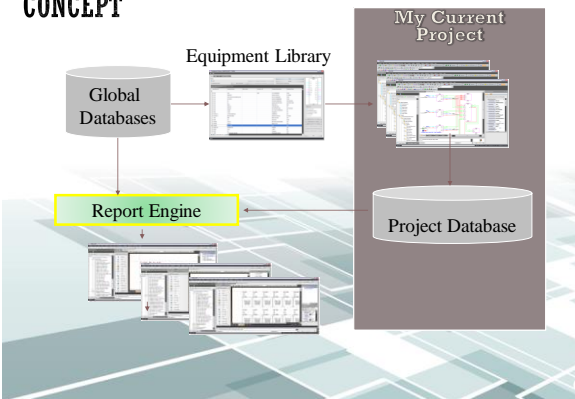
SYSTEM DATABASES



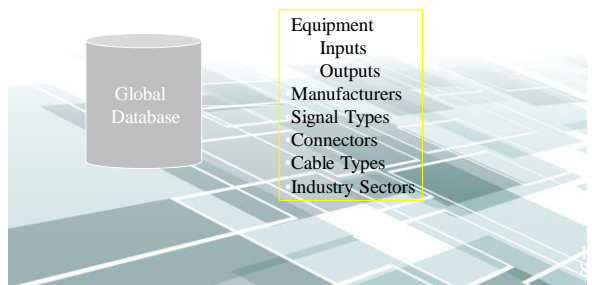
SYSTEM REPORTS



CONCEPT

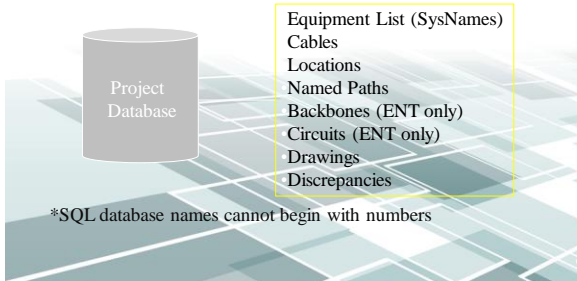


GLOBAL DATABASE (WIRECADGLOBALEQUIPMENT.VDB3) VISTADB (WIRECAD_GLOBAL_EQUIPMENT.MDF) SQL



PROJECT DATABASE

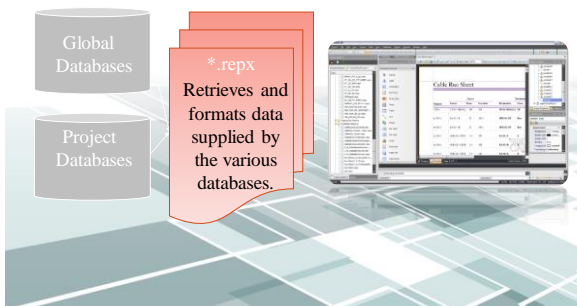
(YOURPROJECTNAME.VDB3) VISTADB
(YOURPROJECTNAME.MDF) SQL*



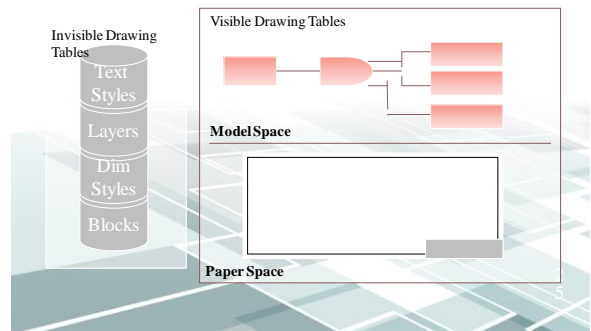
REMEMBER!!!

- The **F1** key opens the on-line help file.
- Also check out the WireCAD wiki @ www.wirecad.com/wiki or from within WireCAD click Help>WireCAD wiki.

REPORT FILE CONCEPT *.REPX



DRAWING FILE



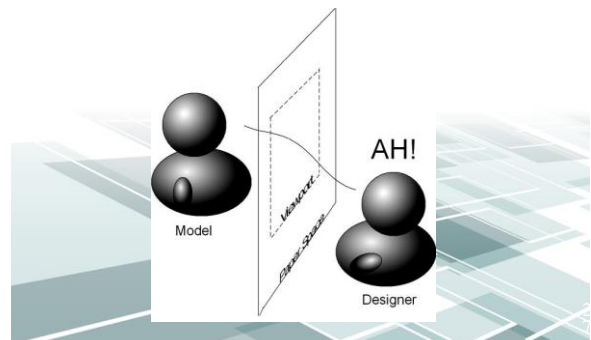
DRAWING SPACES

The CAD file organizes view into two basic drawing spaces: Model and Paper(2K allows for multiple paper spaces called layouts).

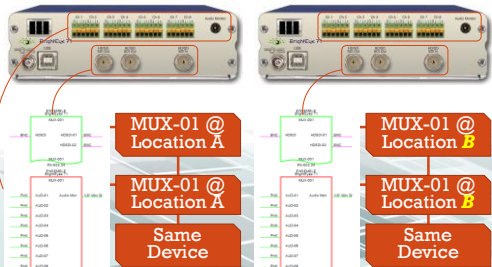
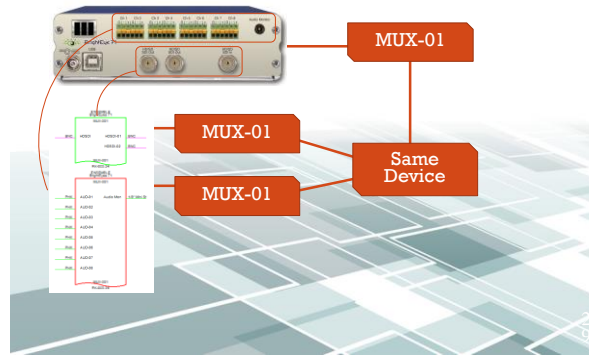
The Model space is where the actual model or drawing is drawn.

The Paper space provides opportunity to lay up different views to print.

DRAWING SPACES



• END



Different Devices – SysName/Location Pair Differ

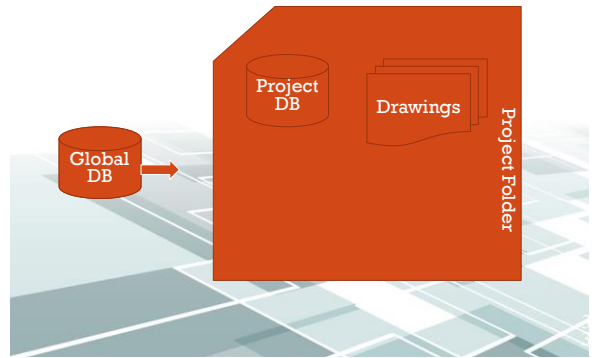
• END



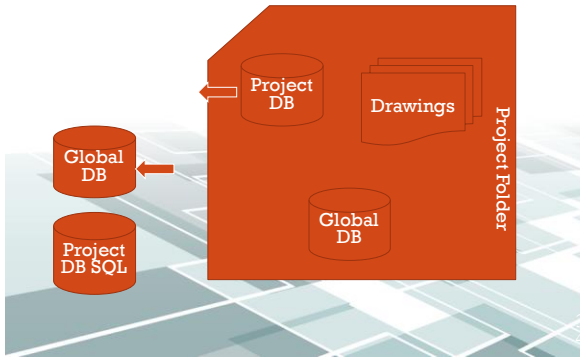
- Why Packup and Go?
 - You are getting ready to hand the project off to your client.
 - You want to create backups.
 - You want to move the project to another machine.



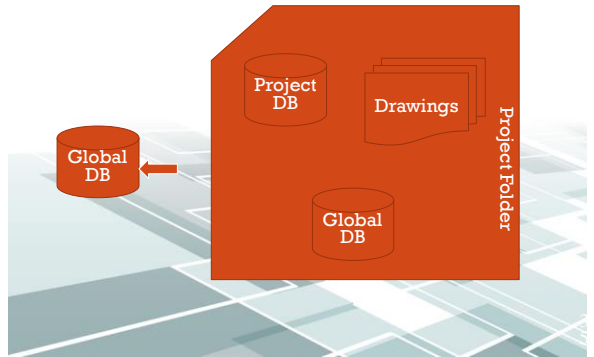
• Packup and Go Process



• Unpack SQL databases



• Unpack VISTADB databases



• To Check-out or Not?

You are given the choice on Packup to Check-out the project. This is typically done with SQL Server projects. The process does not change. The only difference is the project is flagged as checked out and is Read-Only until it is checked back in.



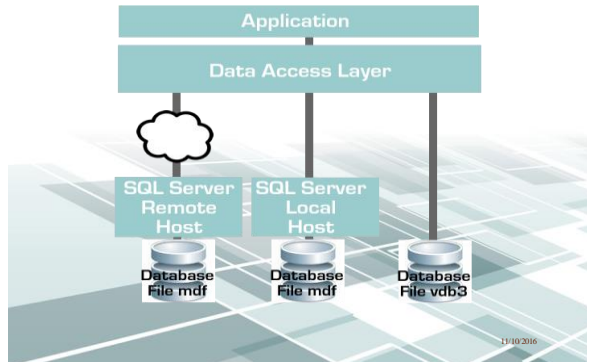
• END



DATABASE FORMAT DECISION

Item	SQL Server	VistaDB
File Based		X
Server Based	X	
Zero Administration		X
Portable		X
ACID Compliant (atomicity, consistency, isolation, durability)	X	X
Database Size	Theoretically unlimited	Practical limit is based upon machine resources. Loading very large databases will require large system resources.
In Process Processing		X

DATABASE FORMAT DECISION



DATABASE FORMAT DECISION

- Will I be moving the project from machine to machine? If yes, consider staying file based on the project.
- Do I have the chops to manage a SQL Server? If no, stay file based. SQL Server requires care and feeding.
- Am I away from my network when I work on WireCAD projects? If you lose connection, WireCAD will become hampered.
- Do I really need the speed enhancements? If you are working on projects with hundreds of thousands of cables, SQL Server is a must.

11/10/2016

• END

MACHINE_ROOM DRAWING PATH

C:\Users\Public\Documents\WireCAD\
WireCAD8\WireCAD Demo Project\Drawings\Single
Lines\MACHINE_ROOM.dwg

11/10/2016

• END

• Library Display Properties Hierarchy

The Device's Saved Settings	Used if they exist and are not overridden by project preferences
	Only exist if the device has been added to a drawing.
Your Saved Project Settings	Used if no Device settings and if they exist.
	Only exist if you have clicked the button to create them.
WireCAD Default Settings	Used by default if no project or device level settings exist

• END

SDI ROUTER



11/10/2016